

Attachement 2 of the work rules of Luftsportclub Hamm from 01.09.2017

Pilot behavior on the aerodrome Hamm-Lippewiesen

General insruction

- ✓ No traffic circuits on sundays

Engine start and radio communication

- ✓ Activate strobe light or beacon prior to engine start
- ✓ Directly after engine start, tune and monitor Hamm Info on 134.055 MHz
- ✓ Initial call shall contain the callsign, PoB, aircraft type, destination/origin
- ✓ Engine warm up not higher than 1000 rpm
- ✓ Taxiways should be used. Exceptions can be permitted by the flight director
- ✓ Engine check must be done on
 - Taxiway C (MC) for runway 24
 - Holding point V for runway 06, heading to the church
 - Taxiway B (MC) for runways 06/24

From taxiway B a backtrack can be coordinated with the flight director

Before take off

- ✓ Monitor 134.055
- ✓ Check if approach sector is clear of any traffic
- ✓ Monitor glider start or winch. Yellow flashing lights indicate activity and it is not allowed to line up on the runway during that time
- ✓ Line up only if all avionics and equipment is set for take off
- ✓ Activate landing lights
- ✓ Prior line up a short message „‘callsign‘ abflugbereit“. That gives the flight director time to check for traffic and transmit the current wind situation

Within the traffic circuit

- ✓ Circuit altitude 1200 ft MSL (QNH Hamm)
- ✓ Avoid overflying of built up areas
- ✓ Position report in any of the circuit segments
- ✓ Constantly monitor the frequency. (You fly safe when you know whats going on)

In Approach

- ✓ Initial call shall contain the callsign, PoB, aircraft type, destination/origin
- ✓ Monitor the frequency
- ✓ Engine driven airplanes may only join the circuit when they have at least a beacon or a strobe activated
- ✓ Landing lights on (Prevents bird strikes and makes you visible for others)

After landing

- ✓ Vacate runway as soon as possible
- ✓ Backtrack only when traffic permits. The flight director will not approve a backtrack, this is always on own discretion of the pilot
- ✓ For parking, use parking spots P1-P4, avoid blocking taxiway M

Take offs and landings against operational direction

- ✓ In general, operation against ldg/take off direction is not allowed
- ✓ Exceptions can be made by the flight director in terms of bad weather or light conditions
- ✓ The flight director will **not approve** the option, this is on own discretion
- ✓ The flight director **will deny** the request if safety is no longer guaranteed

Overflying of Hamm

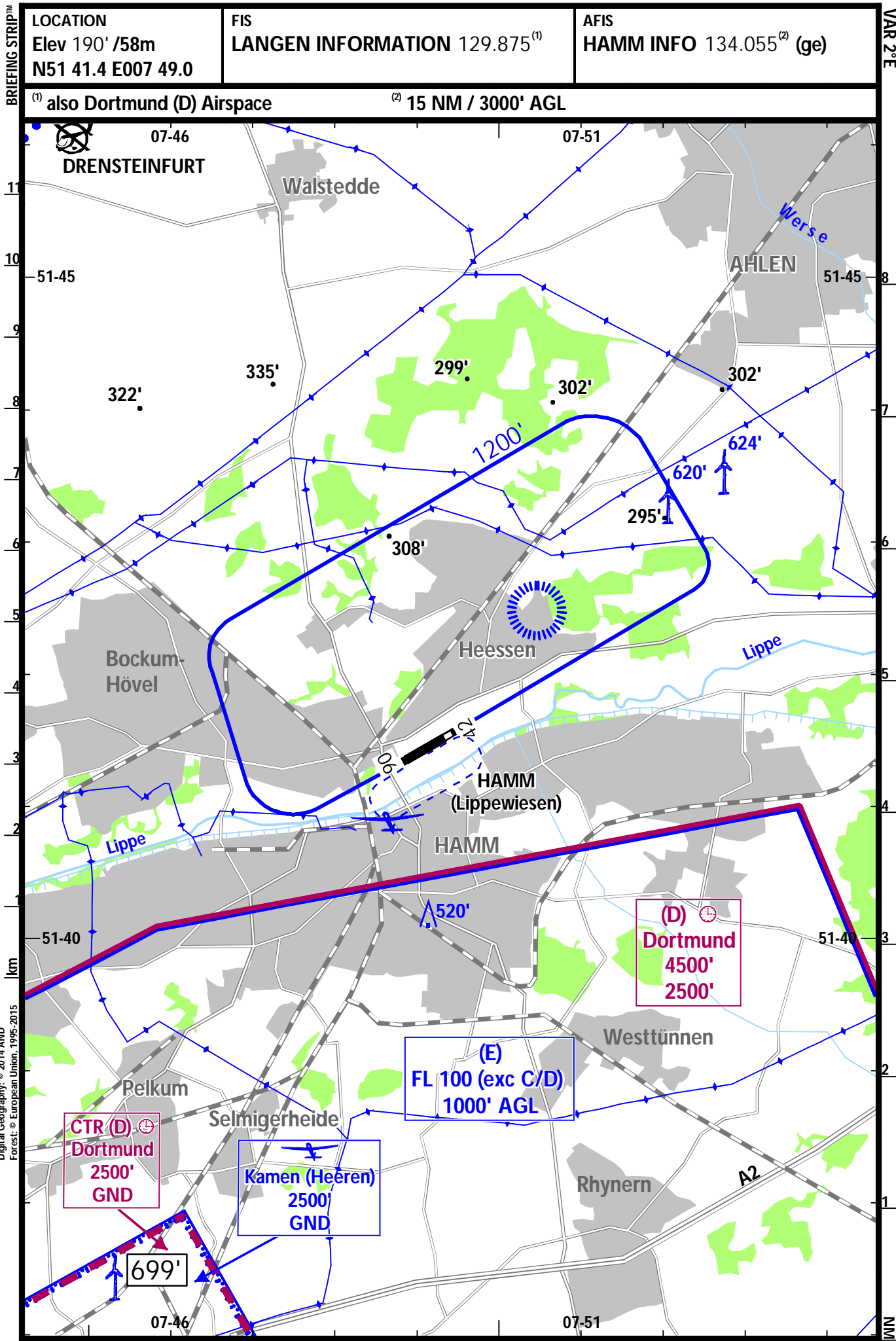
Overflying of the city Hamm and adjacent districts is not allowed below 2200 ft MSL. This can only be omitted for a safe execution of the flight (take off, landing, bad weather conditions). Take airspace D (non CTR) of Dortmund into account, which has a lower limit of 2500 ft MSL.

Luftsport-Club Hamm e.V.

EDLH
LIPPEWIESEN

19 OCT 18 (19-1)

HAMM
GERMANY




Digital Geography: © 2014 AND
Forest: © European Union, 1995-2015

EDLH
LIPPEWIESEN

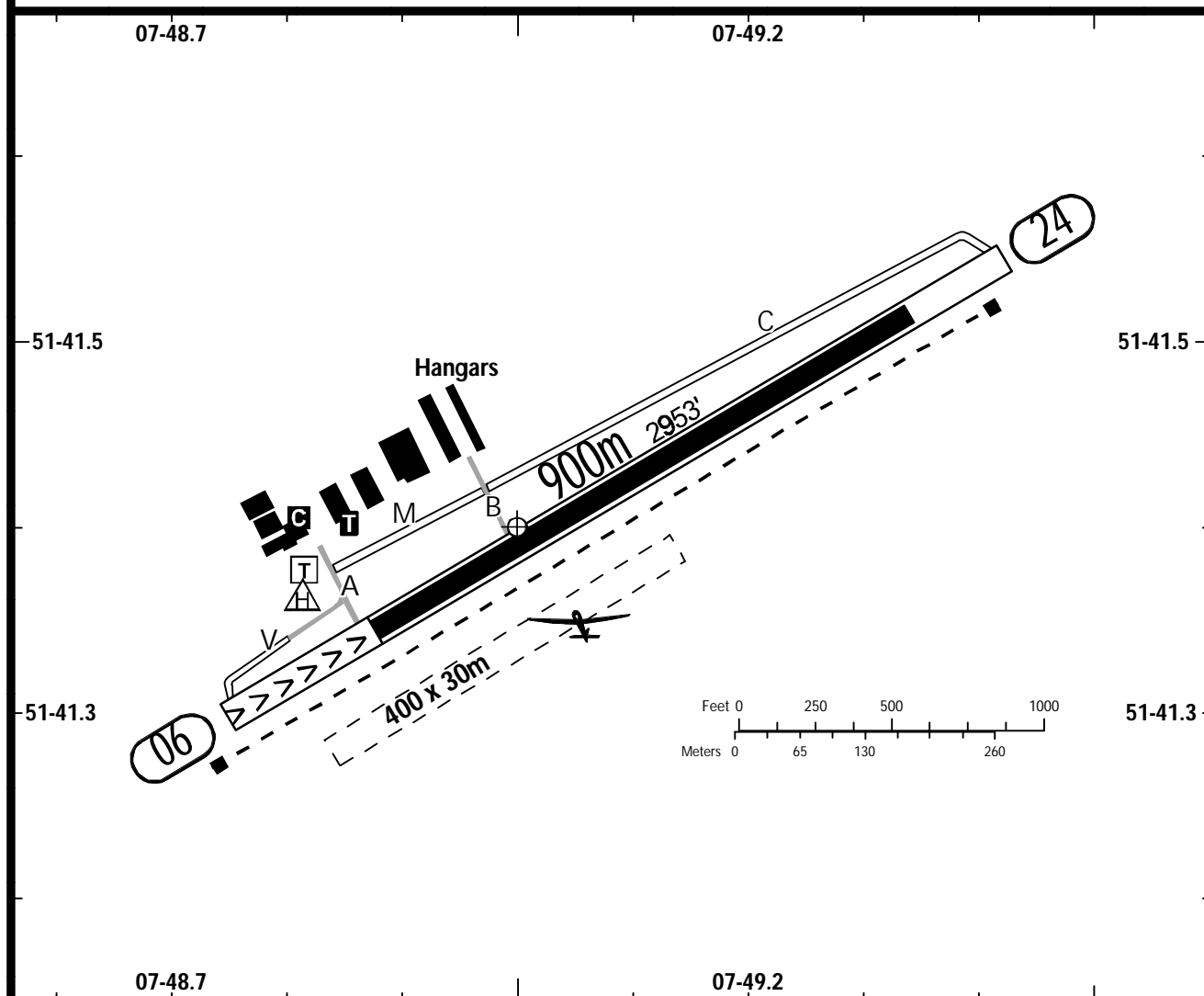
19 OCT 18 **(19-2)**


HAMM
GERMANY

BRIEFING STRIP™

LOCATION Elev 190' /58m N51 41.4 E007 49.0	AFIS HAMM INFO 134.055 ⁽¹⁾ (ge)	ADMITTED AIRCRAFT  (Cable)
---	---	---

⁽¹⁾ 15 NM / 3000' AGL



RWY No	Dimension (m) - Surface	TORA (m)	LDA (m)	Strength	Lights
06 (060°) 24 (240°) ¹	900 x 30 Grass	900 730	730 900	2t MPW (HEL 3.5t MPW)	

¹ Paved RWY (600x20m) within the grass RWY strip.

Contact HAMM INFO at least 5 MIN prior to reaching the AD.

Within AD traffic listening watch shall be maintained.

Simultaneous parallel TKOFs between powered aeroplanes and UL/GLD are not permitted.

Run-up position (MC 06) for TKOF RWY 06 at TWY B.

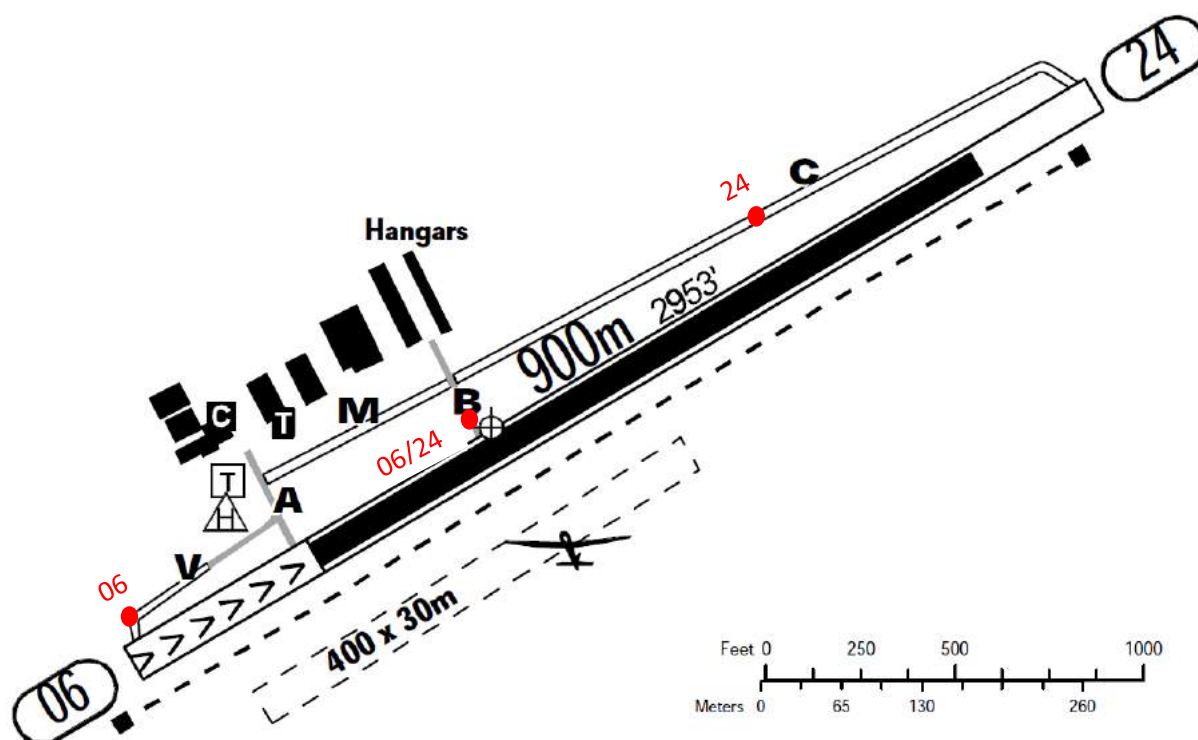
Avoid St. Barbara hospital 1.5 NM NE of AD.

Overflying of the town of Hamm not below 2000'.

Airfield Information

Airfield Hamm-Lippewiesen (EDLH)

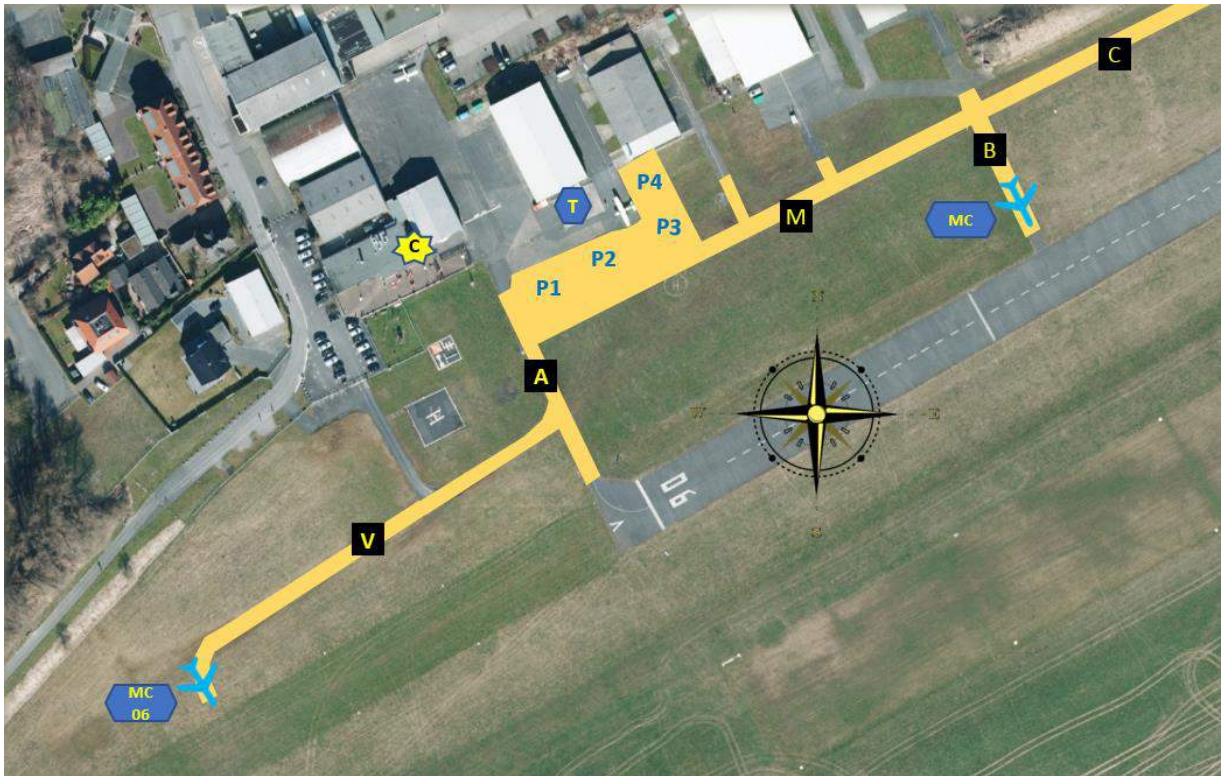
Engine Check Locations



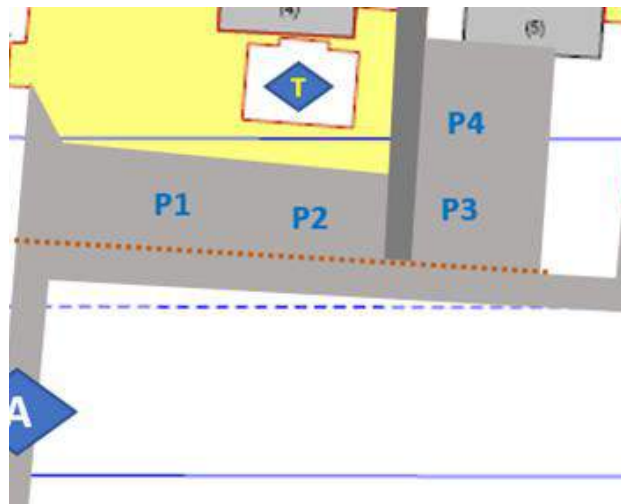
Runway	Taxiway	Additional info
06	V , B	V heading chruch
24	B , C	

A BackTrack to both takeoff directions can be done out of taxiway B. The pilot is always responsible for doing a BackTrack and it has to be done on own discretion. However, it shall be coordinated with the flight director prior execution.

Taxiways



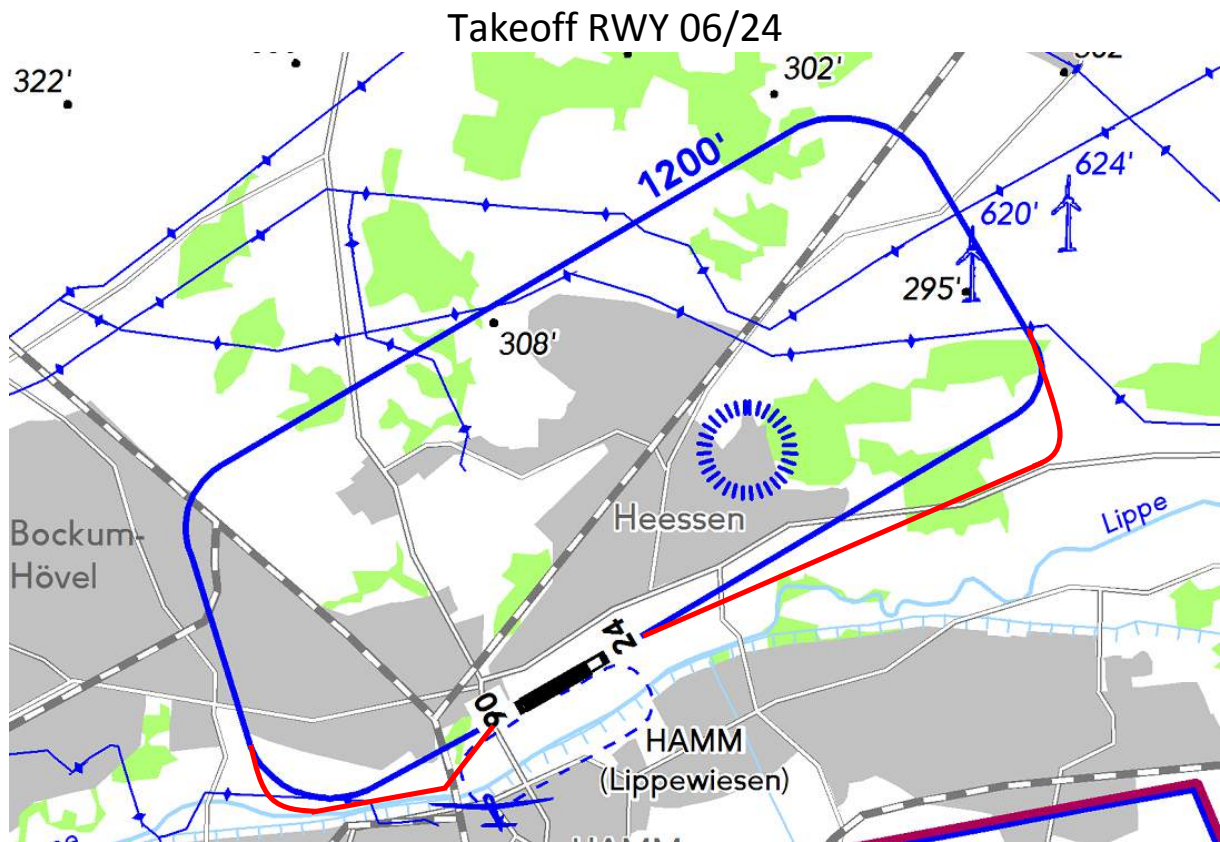
Parking Spots



P1 and P4 – Yellow/Black Pylons
P2 and P3 – Blue Pylons

- Parking with heading
 - North (P1 and P2)
 - West (P3 and P4)
- Wings overhead the pylons

Noise Abatement Take-Off



Do not turn south below 2200 ft MSL

Caution: Airspace D Dortmund south of aerodrome beginning at 2500 ft MSL

Departure RWY 24

- When passing the main street directly behind the airfield border, turn left by 10° until reaching Lippe river
- Stay north of Lippe river
 - Follow river and channel straight out to the western power plant
 - or
 - Follow traffic circuit by turning right overhead the industrial area

Departure RWY 06

- When crossing airfield border, turn right heading 070°
 - Stay north of Lippe river
 - For at least 5 NM
 - or
 - Follow traffic circuit by turning left into crosswind when you reach the windmill power plants
-

Arrival RWY 06

- Caution: High building in short final
- Touchdown only on paved surface at marked treshold (White bar)